

# Vacuum Controller NVC-3000

NEW



NVC-3000

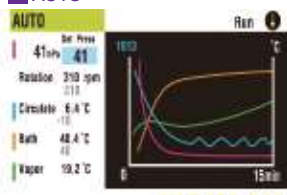
## Control panel



### MANUAL



### AUTO



### PROGRAM



### STEP PROGRAM



## Features:

- 1, Highly visible color LCD enables convenient control of rotary evaporator, water bath, recirculating chiller, and diaphragm vacuum pump.
- 2, Proper setting of 55 types of solvent are pre-programmed including 10 types of common solvents. In addition, 10 types of solvent can be set, so the total 65 types of solvent are available.
- 3, Automatically detects the boiling point and control vacuum rate, concentration process can be completed easily.
- 4, Automatic and manual cleaning function minimize the remaining of solvent.
- 5, Equipped with Hold function which prevents bumping of sample.
- 6, By using 1 set of diaphragm vacuum pump with 2 sets of vacuum controllers, able to control the pressure for 2 sets of rotary evaporators.

Product	Vacuum Controller
Model	NVC-3000
Cat No.	269378
Vacuum setting range	0 to 760mmHg (Torr), 0 to 1013hPa(mbar)
Vacuum measuring range	0 to 800mmHg (Torr), 0 to 1066hPa(mbar)
Vapor temp. measuring range	-20 to 150° C (when using optional vapor temperature sensor)
Set • Control method	Volume dial, Membrane key pad • Open/Close solenoid valve, Input variable voltage
Pressure unit	mmHg, Torr, hPa, kPa, mbar
Control mode	Fixed value control, Auto control, Slope control, Pressure step control
Control items	Pressure, Temperature (cooling water, heating bath, vapor), Automatic lift up or down of motorized jack
Display	Color TFT LCD (4.3 inch)
Display orders	Control mode, Control condition, Measured pressure, Set pressure, Vapor temperature (when using optional vapor temperature sensor), Operating time, heating bath temperature, cooling water temperature, rotation speed of rotary evaporator (when connecting with communication cables)
External input • output	Recirculating chiller, heating bath, rotary evaporator common communication port, NVC-NVC communication port, Inverter vacuum pump communication port, pump control box communication port, vapor temperature sensor port, USB port (when using a computer)
Ambient temperature	5 to 35° C
Overall dim' s (mm)	138.7W x 50(64.5)D x 114.2H
Weight	Approx. 670g
Power	0.1A, 10VA • AC100V to 240V 50/60Hz