

EYELA

360° Vertical Rotary Shaker

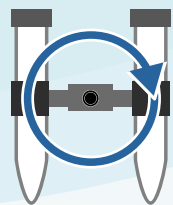
**A unique compact shaker for triple motions
Vertical rotation, Reciprocal, Reciprocal + Vibration**

Model MRM-1000

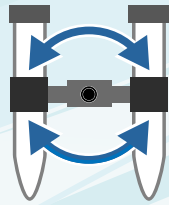


TOKYO RIKAKIKAI CO., LTD.

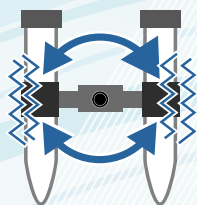
Vertical rotation



Reciprocal



Reciprocal + Vibration



Videos describing product features and characteristics



We provide videos on our website for further information. Videos introduce you points that cannot be expressed in detail in our catalog.



Click here to see the movie for the actual shaking motions of vertical rotation, reciprocal and reciprocal + vibration in Model MRM-1000.

3 types of shaking methods (Rotary, Reciprocal and Reciprocal + Vibration)

- Vertical rotation: 360° vertical rotation
- Reciprocal: Reciprocating rotation at an inclined angle
- Reciprocal + Vibration: Reciprocate with narrow amplitude (intensity: 3 levels). This vibratory motion disperses the sample on the wall surface by swinging the vessel from side to side.

This 360° Vertical Rotary Shaker is capable of shaking a variety of vessels. 4 types of racks are available and can be changed with one-touch operation.



MRM-1000 Main unit



Rack: MRM-R50 + MRM-R1.5



Rack: MRM-R15 × 2



Rack: MRM-RP

4 types of racks can be selected according to the vessels used, and up to two tube racks can be attached. Flexible configuration is possible according to vessel size and number of racks (1 rack only in case of Plate rack).

Model	MRM-1000
Cat. No.	280840
Rotation method	Vertical rotation, reciprocal, reciprocal+vibration
Rotation speed range	1 to 100rpm
Inclination angle	0 to 359° (1° increments)
Timer function	99 hr 59 min 59 second
Rack (sold separately)	4 types
Rack load capacity	Approx. 750g (incl. rack)
Ambient temperature range	4 to 50°C
Ambient humidity range	30 to 80%RH
Outer dimensions (mm)	333(340)W×160D×157H
Weight	Approx. 3.2kg
Power input and supply voltage	0.2A, 20VA / 100VAC 50/60Hz

※Specifications are room temperature 20°C, rated power supply voltage, 50Hz, and no load.

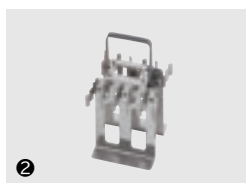
※Racks and vessels are not included. Please select racks from the options according to your applications.

※115V and 220V types are also available.

Option



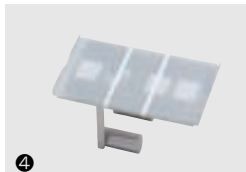
①



②



③



④

Product name	① 1.5/2.0mL Tube rack	② 15mL Centrifuge tube rack	③ 50mL Centrifuge tube rack	④ Plate rack
Model	MRM-R1.5	MRM-R15	MRM-R50	MRM-RP
Cat. No.	280850	280860	280870	280880
Compatible vessels	1.5mL tube 2.0mL tube	15mL Centrifuge tube	50mL Centrifuge tube	T-75 Flask, other flat bottom vessels
Number of vessels	12 pcs	6 pcs	4 pcs	Less than 180×100mm
Number of racks	Max. 2 pcs	Max. 2 pcs	Max. 2 pcs	1 pc
Weight	Approx. 130g	Approx. 165g	Approx. 175g	Approx. 470g

TOKYO RIKAKIKAI CO., LTD.



<https://eyelaworld.com>

TN Koishikawa Bldg.
1-15-17 Koishikawa
Bunkyo-ku, Tokyo
112-0002 Japan

Tel: +81-3-6757-3378
Fax: +81-3-3868-6571
E-mail: contact@eyelaworld.com

※The appearance and specifications of the products are subject to change without notice.